

# Elements<sup>3</sup>

SOLID SURFACE



elements3.co.uk



stunning and durable  
mineral-based solid surface

# SOLID SURFACE Elements3



**Elements3** is a 3mm mineral-based solid surface that offers the same aesthetics as thicker sheets whilst providing significant cost savings. With a **10 year warranty**, you can be assured of a high performance product suitable for a range of applications and environments.



food safe  
and hygienic



impact  
resistant



repairable and  
renewable



thermoformable



warm to  
the touch



heat resistant  
up to 180°C



easy to  
clean



seamless  
joints



light fast



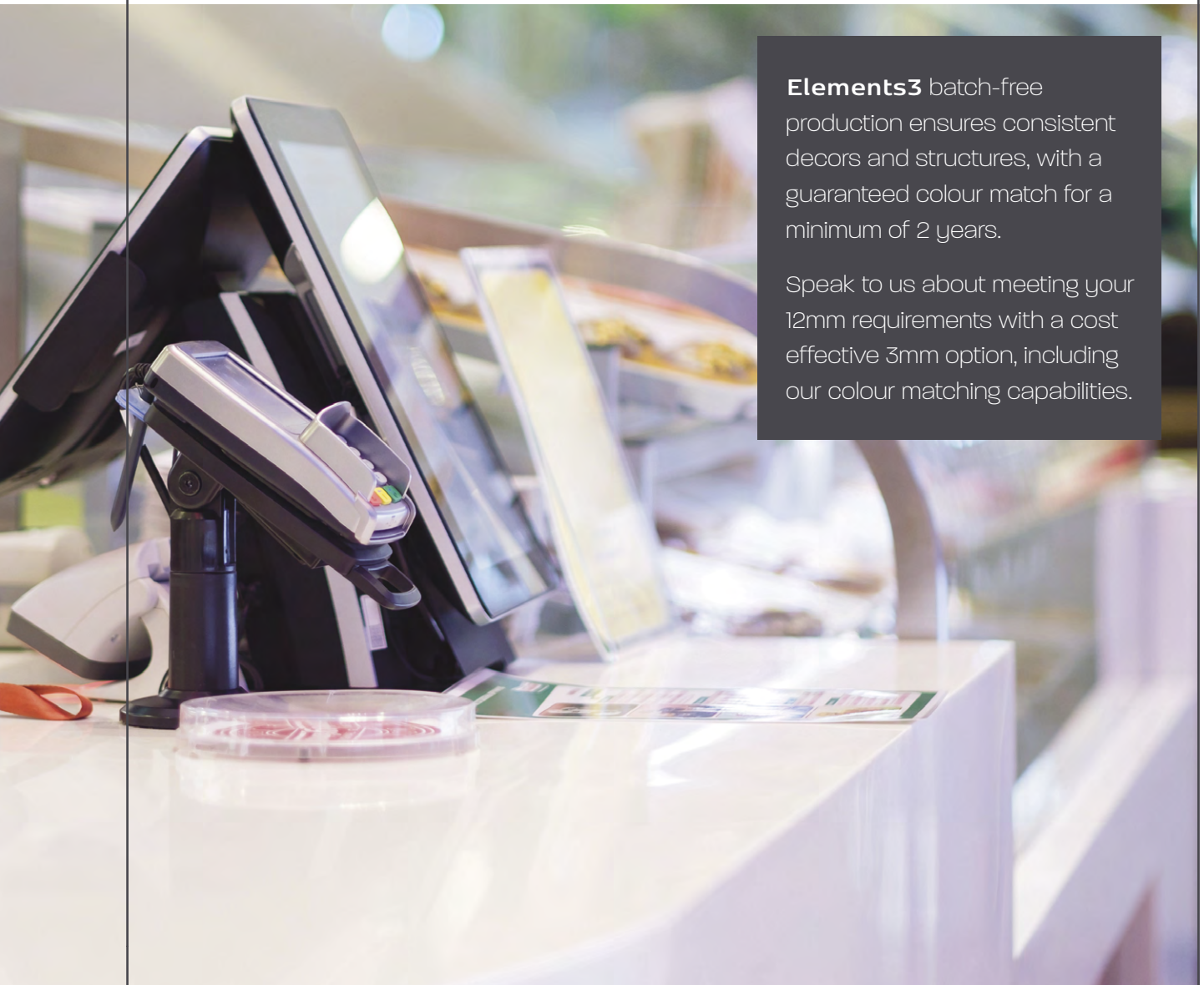
resistant to  
common  
household  
chemicals







**Elements3** is a non-porous material suitable for both horizontal and vertical applications. It can be thermoformed to create organic shapes and curves, offering unlimited design possibilities. Inconspicuous joints provide a smooth, flowing surface which is hygienic and extremely easy to clean.

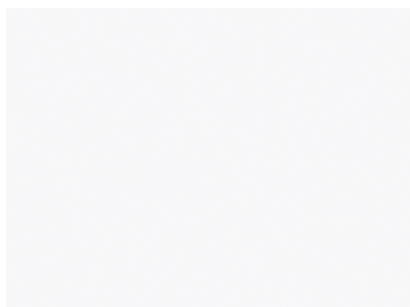


**Elements3** batch-free production ensures consistent decors and structures, with a guaranteed colour match for a minimum of 2 years.

Speak to us about meeting your 12mm requirements with a cost effective 3mm option, including our colour matching capabilities.

## Decors

Standard sheet size = 3660 x 760mm  
 \*Sheet size = 4100 x 1250mm / 615mm  
 †Available in 3660 x 760mm and 3660 x 915mm



Super White

E3-2008



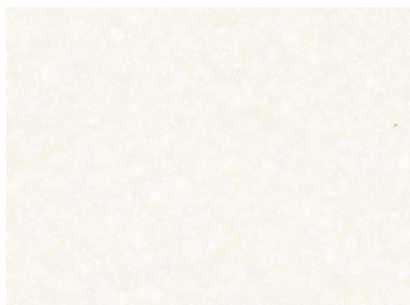
Snow White

E3-2011



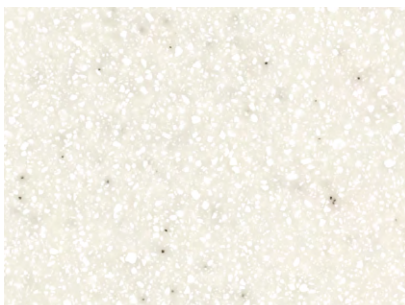
White Crystal\*

E3-2245



Snow Flurry

E3-9117



Arctic Thaw\*

E3-2252



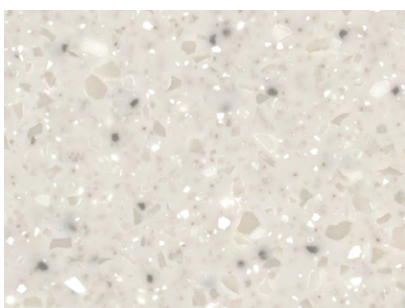
Ice Thaw†

E3-9065



White Pebble\*

E3-236



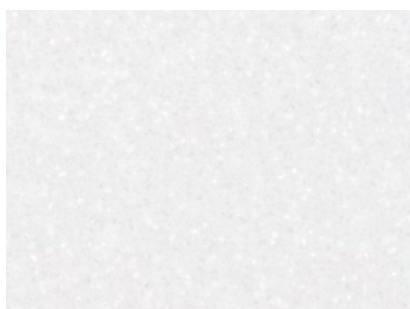
Silver Pebble\*

E3-244



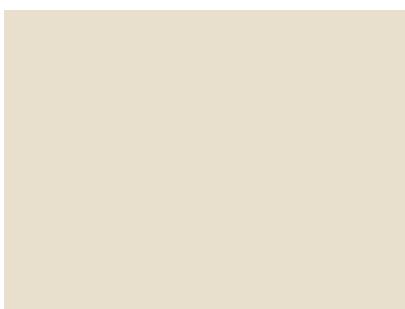
Grey Flurry\*

E3-2258



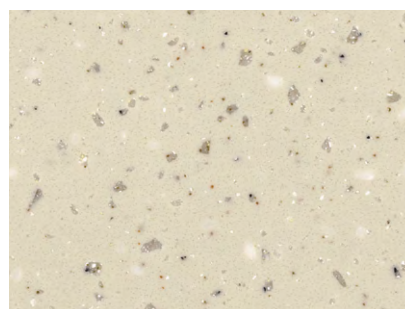
Blizzard

E3-2420



Ivory\*

E3-2007



Sand Flurry\*

E3-3391



Silver Crystal\*

E3-4422



Grey Storm\*

E3-4143



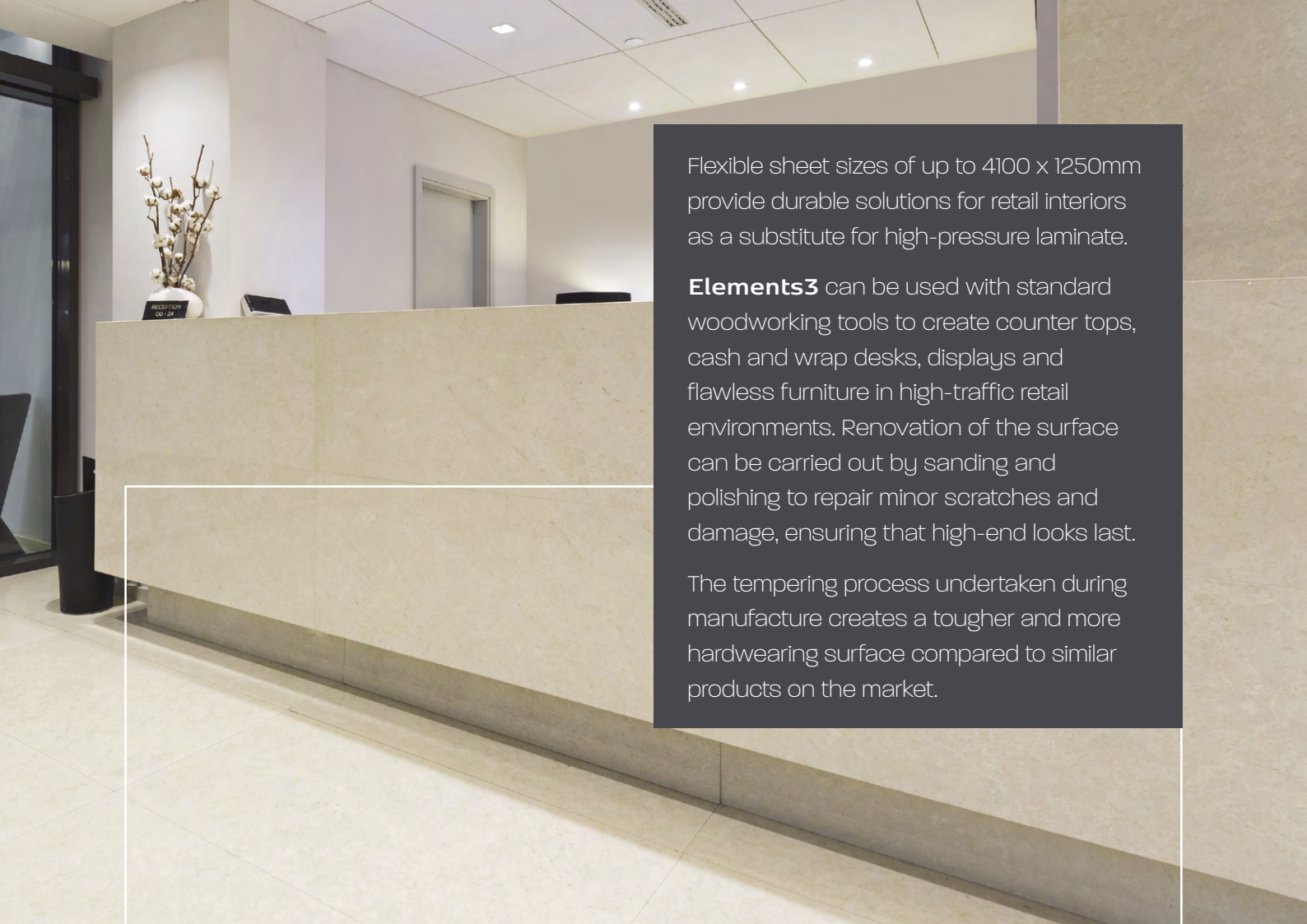
Bronze Shimmer

E3-7830

Sample service available at [www.elements3.co.uk](http://www.elements3.co.uk)

SOLID SURFACE  
**Elements3**

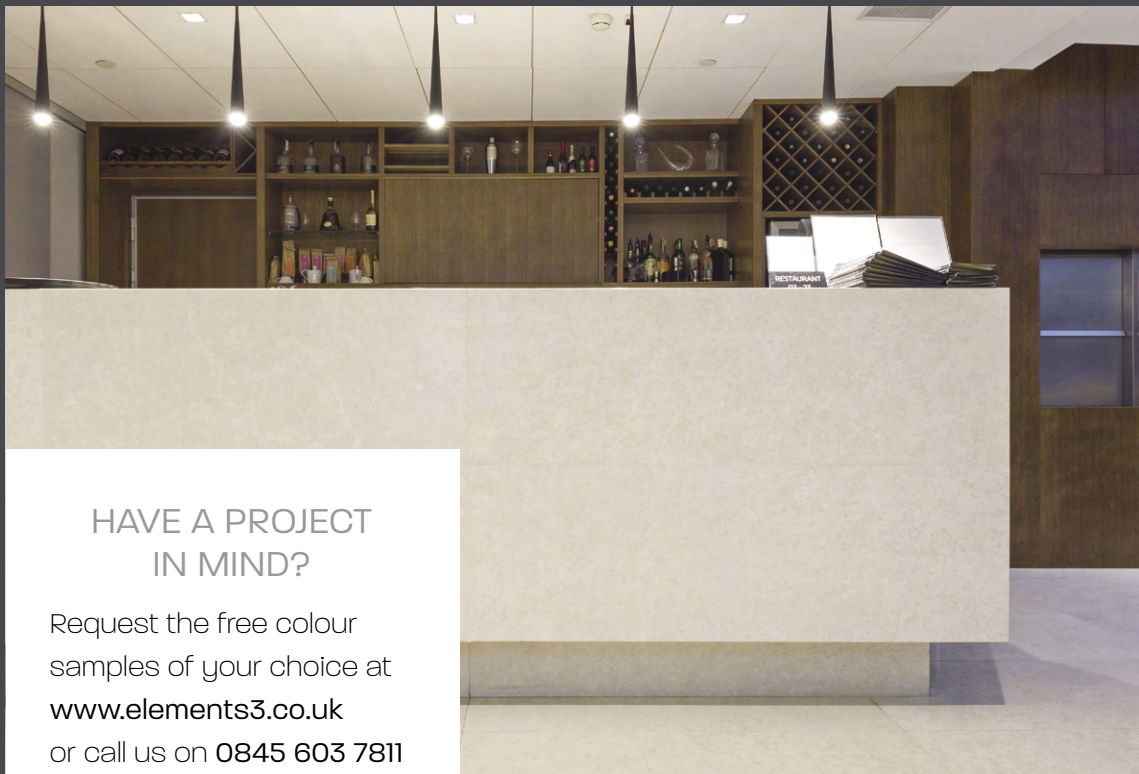




Flexible sheet sizes of up to 4100 x 1250mm provide durable solutions for retail interiors as a substitute for high-pressure laminate.

**Elements3** can be used with standard woodworking tools to create counter tops, cash and wrap desks, displays and flawless furniture in high-traffic retail environments. Renovation of the surface can be carried out by sanding and polishing to repair minor scratches and damage, ensuring that high-end looks last.

The tempering process undertaken during manufacture creates a tougher and more hardwearing surface compared to similar products on the market.



## HAVE A PROJECT IN MIND?

Request the free colour samples of your choice at [www.elements3.co.uk](http://www.elements3.co.uk) or call us on 0845 603 7811 to find out how we can meet your needs.

[www.elements3.co.uk](http://www.elements3.co.uk)

# Technical Specification

Tests	Standard	Unit	3mm
Coefficient of thermal expansion	DIN 53752	K <sup>-1</sup>	5,6 x 10 <sup>-5</sup>
Tensile strength	DIN EN ISO 527	MPa	45
Barcol hardness	DIN EN 59	-	60
Modulus of elasticity	DIN EN 310	N/mm <sup>2</sup>	8000
Indentation hardness	DIN EN ISO 2039-1	N/mm <sup>2</sup>	260
Impact resistance (falling-ball test)	DIN EN ISO 19712	mm (Falling height)	-
Resistance to elevated temperature (long-term exposure)	DIN EN ISO 13894-1	°C	70
Cold-bending radius	Manufacturer's standard	mm	≥ 1000
Water absorption	EN ISO 10545-3	%	0,083
Resistance to dry heat	DIN EN ISO 19712	(180 °C)	Degree 4
Resistance to damp heat	DIN EN ISO 19712	(100 °C)	Degree 4
Thermal-cycle water-resistance test	DIN EN ISO 19712	-	pass
Light-fastness (Blue scale 6)	ISO 4892 ISO 105-B02 ISO 105-A02	Grey scale	≥ 4
Food-safety	EN 1186 EN 13130 CEN/TS 14234	-	approved
Resistance to mould and bacteria	DIN EN ISO 846 A/C	-	resistant

Degree 1: Surface damages | Degree 2: Major change in gloss level and/or colour | Degree 3: Moderate change in gloss level and/or colour  
Degree 4: Slight change in gloss level and/or colour, only visible from certain angles | Degree 5: No visible changes

Spots, dirt and similar surface defects	Standard	Unit	Evaluation	
			Allowed size of spot	Quantity
Fine and Coarse decors	Manufacturer's standard	mm	≤ 0,5	without restriction
Fine and Coarse decors	Manufacturer's standard	mm	→ 0,5 - ≤ 1	1 Spot/300 x 300 mm <sup>*1</sup>
UNI decors	Manufacturer's standard	mm	≤ 0,5	1 Spot/100 x 100 mm <sup>*2</sup>

<sup>\*1</sup> The complete dirt area must not be →1,0mm<sup>2</sup> per 1m<sup>2</sup> sheet material. (For example at a diameter of 0,5mm Ø 5 spots/m<sup>2</sup>)

<sup>\*2</sup> The complete dirt area must not be →1,0 mm<sup>2</sup> per 1m<sup>2</sup> sheet material. (For example at a diameter of 1,0 mm Ø 1 spot/m<sup>2</sup>)

Tolerances	Standard	Unit	3mm
Thickness	Manufacturer's standard	mm	±0,2
Dimensions of falling sizes	Manufacturer's standard	mm	min. 4050 x 1200

All tests have been carried out with the decor E3-2011 at 20°C.

Product-related test certificates or classification reports are available on request.

Signs of scratches and daily wear and tear are inevitable during normal use and these become more obvious in the case of high-gloss and colour-intensive decors in comparison to other decors. Especially for **Elements<sup>3</sup>** Uni decors minor occasional dust inclusions cannot be ruled out due to production procedures. Colour matched adhesive available – please ask for details.

T: 0845 603 7811 E: [info@elements3.co.uk](mailto:info@elements3.co.uk)

Sample service available at  
[www.elements3.co.uk](http://www.elements3.co.uk)

Exclusively distributed by  
International Decorative Surfaces

