

**BREEAM UK.**

BERRY  ALLOC

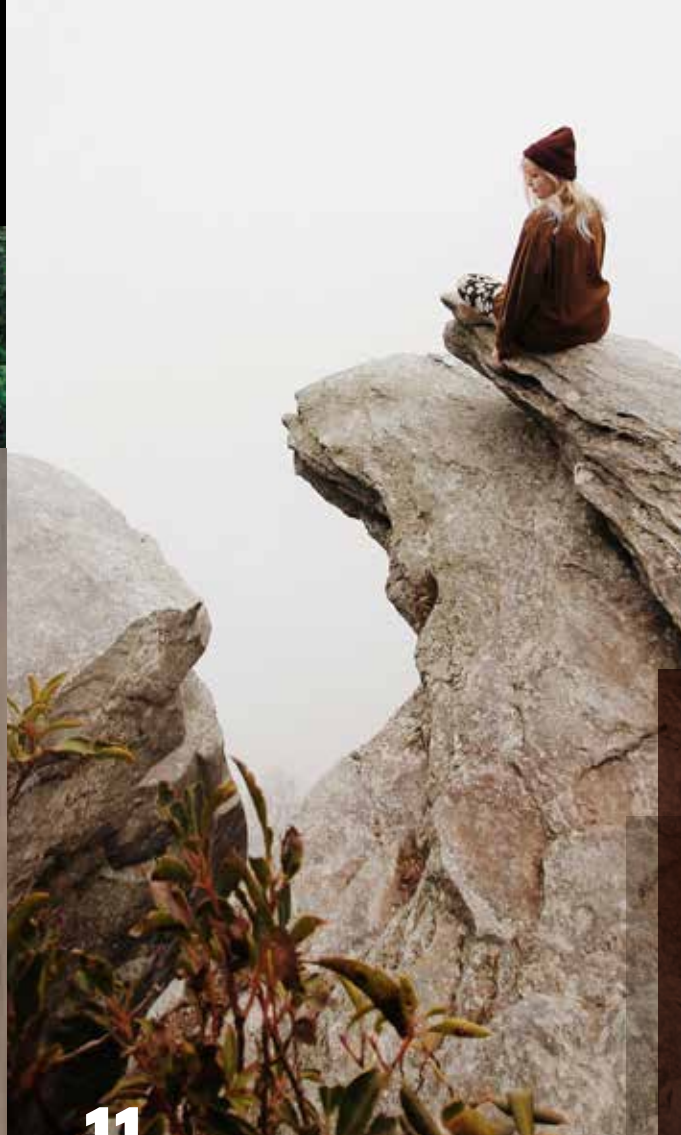
**Magnify your  
UK BREEAM  
Credits.**



8



11



14



16



20



# Magnifying your UK BREEAM Credits with BerryAlloc.

## New construction

**4 BerryAlloc's commitment to the environment**

**6 Defining BREEAM**

**8 Management**

MAN 02 Life cycle cost & service life planning

MAN 03 Responsible construction practices

MAN 04 Commissioning and handover

**11 Health & Wellbeing**

HEA 02 Indoor Air Quality

HEA 04 Thermal Comfort

HEA 05 Acoustic Performance

**14 Energy**

ENE 01 Reduction of energy use and carbon

**16 Materials**

MAT 01 Building Life Cycle Assessment

MAT 02 Environmental Product Declarations

MAT 03 Responsible Sourcing of construction products

MAT 05 Designing for durability and resilience

MAT 06 Material efficiency

**20 Waste Management**

WST 01 Construction Waste Management

WST 04 Speculative finishes

WST 06 Design for disassembly and adaptability

**22 Services & resources**



# BerryAlloc's commitment to the environment.

At BerryAlloc, we prioritise the well-being of our customers, end-users, as well as the welfare of our planet. From management practices to our production processes, **sustainability** is an integral **part of our DNA**.

We are devoted to continuously reducing our impact and building a healthier environment; because a healthier planet guarantees healthier people.

All our products (**Laminate (DPL)**, **High Pressure Floors (HPF)**, **Parquet (PQT)**, **Luxury Vinyl Planks & Tiles** and, **Walls**) are phthalate-free, comply with REACH, and, hence, meet the highest indoor air quality standards.



We select our materials through a smart, thoughtful, and sustainable process. Quality and recyclability are key factors in our battle to eliminate waste. In line with this commitment, we strive to use as little material as possible in our products without compromising quality.

A BerryAlloc floor means supporting responsibly-sourced materials and helping preserve nature. All our wood is sourced from sustainably managed forests and can be PEFC™ certified. With the use of sustainable materials, we guarantee longer-lasting and more durable floors.

Because of this commitment, our products can help you achieve your ideal BREEAM certification score.



**Vinyl Planks & Tiles**  
100% recyclable  
Up to 50% recycled content

## Overview of BREEAM Credits per product

BREEAM Credits each category	MAN	HEA	ENE	MAT	WST
— laminate. (DPL)	4	5	1	5	4
— high pressure floors. (HPF)	4	5	1	5	4
— parquet. (PQT)	4	5	1	5	4
— vinyl planks & tiles. (LVT)	4	5	1	5	4
— walls.	4	4	1	5	4

Certified Analysis executed by independent qualified party, ENCON.

# BREEAM defined.

BerryAlloc products bring **quality and sustainability** to every project.

Building Research Establishment's Environmental Assessment Method (BREEAM) is the leading global environmental certification assessment for the built environment.

Developed by world-leading building experts BRE, buildings are assessed on the ten categories of Management, Health & Wellbeing, Energy, Transport, Water, Materials, Waste, Land Use & Ecology, Pollution & Innovation. BREEAM ratings range from pass to outstanding, reflecting the achievement of each project and its stakeholders.

When a project is BREEAM certified, it is committing to a healthier, greener, and more valuable building development.

Regarded as a quality label, BREEAM certification reassures customers of the value and impact provided in each project from the sustainable design down to the high-performing materials selected in each building.

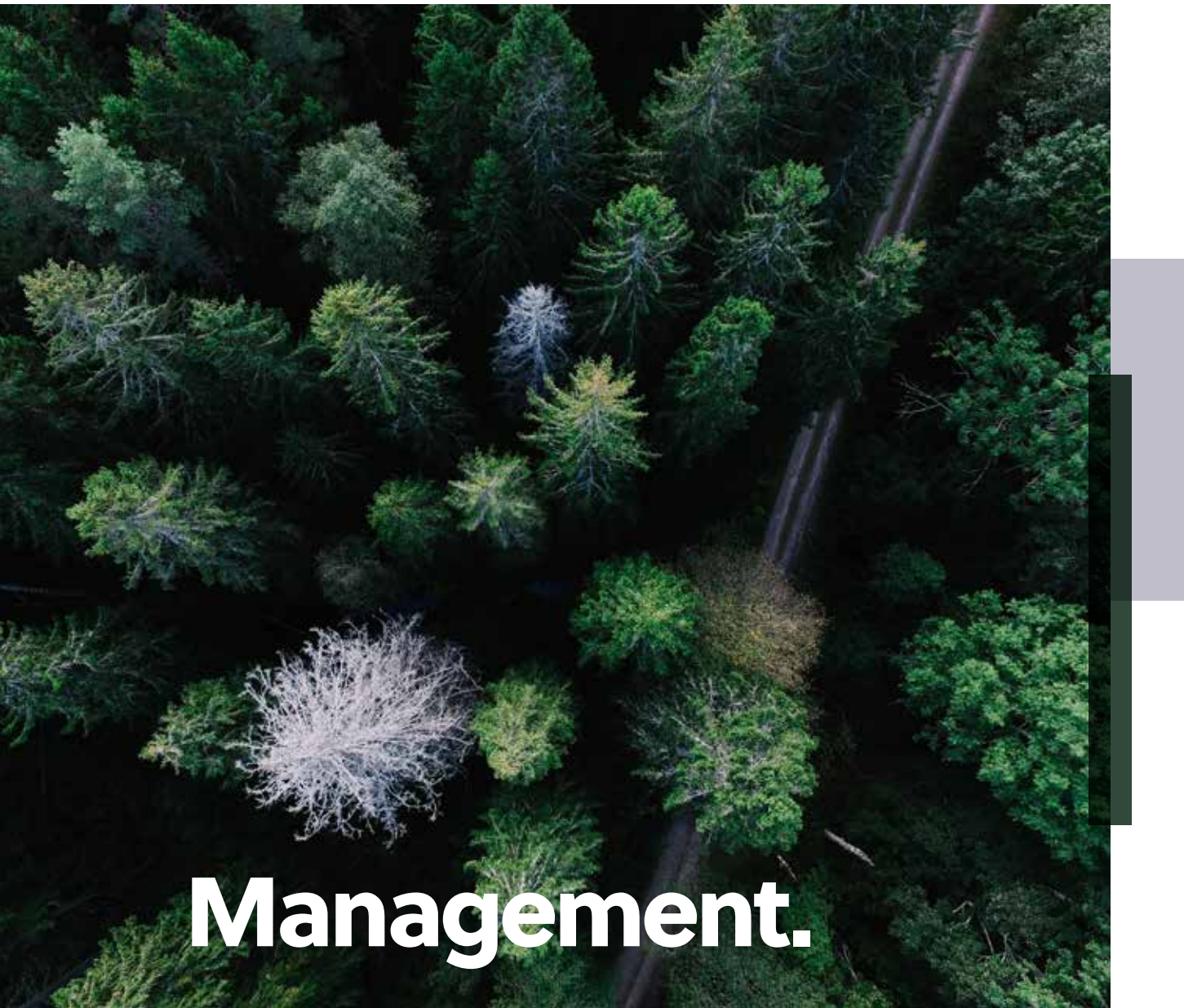


**Our BerryAlloc products can contribute up to 19 BREEAM credits across the categories of Management, Health & Wellbeing, Energy, Materials & Waste.**

## Category chart

Category	Issue	max. credits	DPL	HPF	PQT	LVT	Walls
Management	<b>MAN 02</b> Life cycle cost and service life planning	4	2	2	2	2	2
	<b>MAN 03</b> Responsible construction practices	6	1	1	1	1	1
	<b>MAN 04</b> Commissioning and handover	4	1	1	1	1	1
Health & Wellbeing	<b>HEA 02</b> Indoor Air Quality	4	3	3	3	3	3
	<b>HEA 04</b> Thermal comfort	3	1	1	1	1	1
	<b>HEA 05</b> Acoustic Performance	3	1	1	1	1	0
Energy	<b>ENE 01</b> Reduction of energy use and carbon	13	1	1	1	1	1
Materials	<b>MAT 01</b> Building Life Cycle Assessment	7	1	1	1	1	1
	<b>MAT 02</b> Environmental Product Declaration	1	1	1	1	1	1
	<b>Mat 03</b> Responsible Sourcing of construction products	4	1	1	1	1	1
	<b>Mat 05</b> Designing for durability and resilience	1	1	1	1	1	1
	<b>Mat 06</b> Material efficiency	1	1	1	1	1	1
Waste	<b>WST 01</b> Construction Waste Management	5	1	1	1	1	1
	<b>WST 04</b> Speculative finishes	1	1	1	1	1	1
	<b>WST 06</b> Design for dissassembly and adaptability	2	2	2	2	2	2
TOTAL		59	19	19	19	19	18





The BREEAM management category encourages the adoption of **sustainable management**. This category evaluates how sustainability practices are embedded across each project from initial brief to delivery and maintenance. The management category accounts for 11% of the total BREEAM evaluation in the UK.

max.  
credits

4

**MAN 02**  
Life cycle cost  
& service life  
planning

**AIM**  
To promote the business case for sustainable buildings and to deliver whole life value by encouraging the use of life cycle costing to improve design, specification, through-life maintenance, and operation.

- Assessment criteria**
- Elemental Life Cycle Cost (LCC) (2 credits)**
- An elemental LCC plan (future replacement, service life, maintenance, operation costs) has been carried out at the Concept Design stage.
- Component level LCC options appraisal (1 credit)**
- A component level LCC options appraisal (envelope, services, finishes, external spaces) has been carried out at the Technical Design stage

The BerryAlloc way

- We offer a commercial warranty for each type of product (DPL up to 6 years, HPL and LVT up to 10 years, PQT up to 30 years).
- HPL, LVT and PQT are the favoured products for LLC of commercial buildings.

DPL	HPF	PQT	LVT	Walls
2	2	2	2	2

max.  
credits

6

**MAN 03**  
Responsible  
construction  
practices

**AIM**  
To recognise and encourage construction sites which are managed in an environmentally and socially considerate, responsible, and accountable manner.

- Assessment criteria**
- Only legally harvested & traded timber is used in the construction process of the project. Any party who at any stage manages the construction site operates an Environmental Management System (EMS).
- Environmental Management (1 credit)**
- The principal contractor operates an environmental management system (ISO 14001/EMAS).
  - All parties who at any point manage the construction site implement best practice pollution prevention policies and procedures on site.
- Monitoring of site impact (1 credit)**
- Set targets, monitor and record data on transport of construction materials and waste.

The BerryAlloc way

- All our wooden products can be PEFC™ certified.
- We have ISO 9001 and ISO 14001 certified companies.
- We promote working on local projects.
- We promote bulk transport to reduce CO<sub>2</sub> emissions.

DPL	HPF	PQT	LVT	Walls
1	1	1	1	1



max.  
credits

4

MAN 04

Commissioning  
& handover

AIM

To encourage a properly planned handover and commissioning process that reflects the needs of the building occupants.

- Assessment criteria
- Handover (1 credit)
- We develop two building user guides (technical and non-technical).
  - We prepare two training schedules (technical and non-technical).

- The BerryAlloc way
- We offer comprehensive manuals on all products.
  - We provide users with clear installation instructions.
  - We include easy-to-use maintenance manuals that help our users to maximize our products' lifespan without compromising on quality.
  - We offer DreamClick®, the world's easiest locking system to install.

DPL	HPF	PQT	LVT	Walls
1	1	1	1	1



The HEA category aims to **enhance the quality of life in buildings**. It recognises and encourages choices that increase the comfort, health and safety of building occupants, visitors, and that of the vicinity. The Health & Wellbeing category accounts for a weight of 14% of the total BREEAM evaluation in the UK.

Health & wellbeing  
(HEA).



max.  
credits

4

HEA 02

Indoor  
Air Quality

**Aim**  
To encourage and support healthy internal environments with good indoor air quality.

- Assessment criteria**
- Emissions from building products (2 credits)
- VOC emissions of internal finishes integral to the building
- Post construction indoor air quality measurement (1 credit)
- Measurement (formaldehyde, VOC) by an external party in the building before occupancy.

**The BerryAlloc way**

- We have undertaken extensive studies on formaldehyde concentration.
- All products maximise indoor air comfort.
- All our products have a chemical-free installation
- All our products are phthalate-free.
- Earned labels and certifications: Indoor Air Quality A+ (French VOC regulation), M1 emission class, E1 certification, CE certification, Indoor Air Comfort Gold, Floorscore, REACH, and BREEAM & LEED testing.

DPL	HPF	PQT	LVT	Walls
3	3	3	3	3

max.  
credits

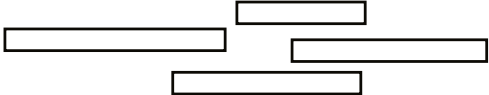
3

HEA 04

Thermal  
comfort

**Aim**  
To ensure the building can provide an appropriate level of thermal comfort.

- Assessment criteria**
- Thermal modelling (1 credit)
- Analysis of thermal comfort level using Predicted Mean Vote (PMV) & Predicted percentage of Dissatisfied (PPD) with a software conform CIBSE AM11
  - Thermal comfort levels in accordance with CIBSE Guide A environmental design or European Standard EN ISO 7730:2005



**The BerryAlloc way**

- All our products have very low heat resistance ( $\leq 0.12 \text{ m}^2\text{K/W}$ ) but LVT has the lowest values ( $\leq 0.04 \text{ m}^2\text{K/W}$ ).
- All our products have great compatibility with underfloor heating.

DPL	HPF	PQT	LVT	Walls
1	1	1	1	1

max.  
credits

3

HEA 05

Acoustic  
Performance

**Aim**  
To ensure the building can provide an appropriate acoustic environment to provide comfort for building users.

- Achieved Criteria**
- The building meets the appropriate acoustic performance standards and testing requirements (vary between types of building) (2 credits)
- Sound insulation
  - Indoor ambient noise level

**The BerryAlloc way**

- We offer five different underlays that can be installed under our floors.
- Our underlays have the same quality standards as our floors and decrease impact sound by 19-21 decibels.
- Our high pressure floors collection comes with an integrated Silent System of 2mm that offers an impact sound reduction of 18-19 decibels.
- Our sound insulations comply with the privacy index.

DPL	HPF	PQT	LVT	Walls
1	1	1	1	0





# Energy.

In terms of points, energy is the most important BREEAM category. This section acknowledges measures that improve the inherent energy efficiency of a project. It encourages the **reduction of carbon emissions** and supports **efficient energy management** throughout the design and operational phases of the project. The Energy category accounts for 16% of the total BREEAM evaluation in the UK.



max.  
credits  
**13**

## ENE 01 Reduction of energy use & carbon\*

### Aim

To minimise operational energy demand, primary energy consumption and CO<sub>2</sub> emissions.

### Assessment criteria

Calculates Energy Performance Ratio for New Construction (EPR NC) and compare with benchmarks (9 credits)

### The BerryAlloc way

- All our products have very low heat resistance ( $\leq 0.12 \text{ m}^2\text{K/W}$ ) but LVT has the lowest values ( $\leq 0.04 \text{ m}^2\text{K/W}$ ).
- All our products have great compatibility with underfloor heating.

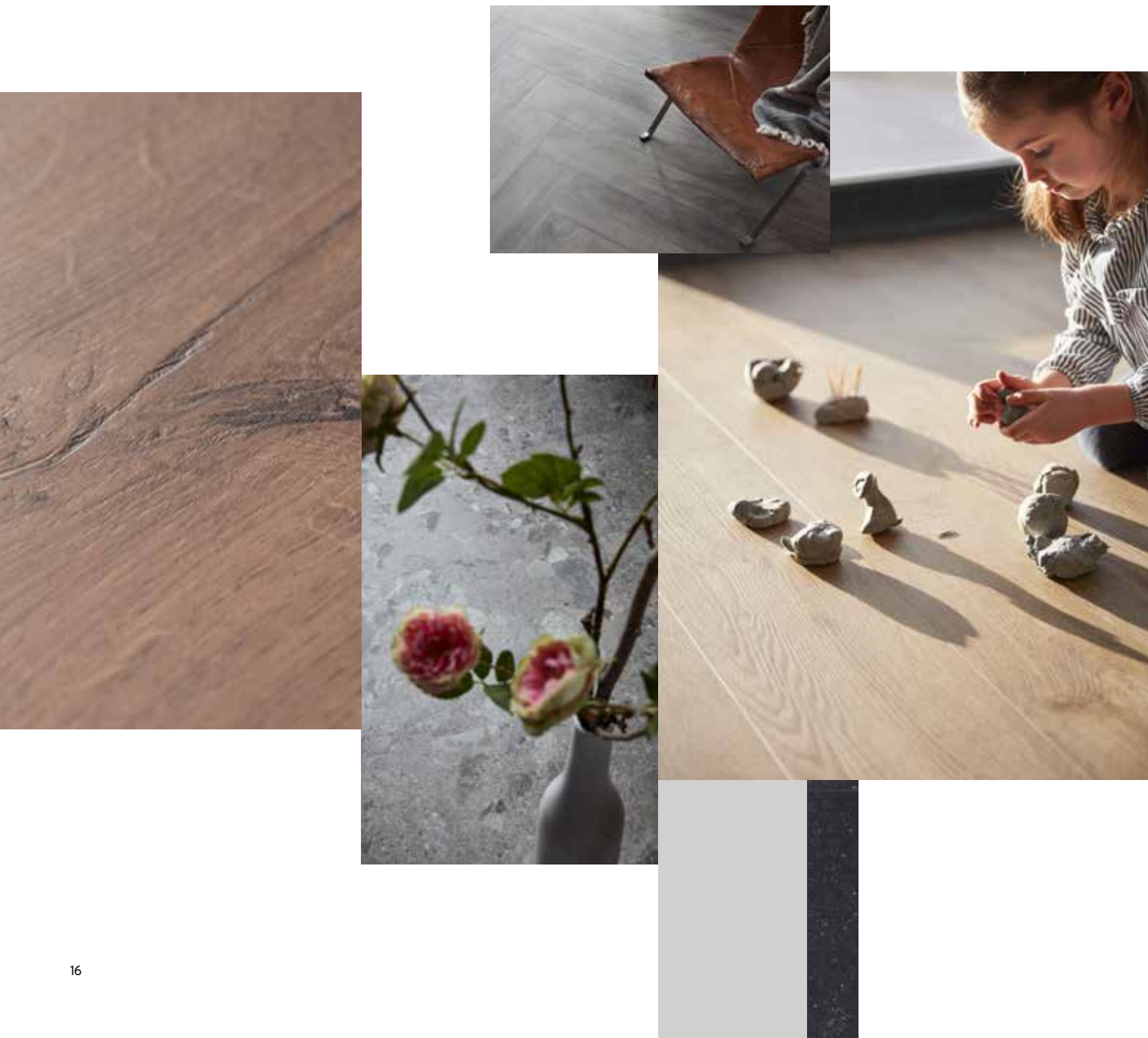
DPL	HPF	PQT	LVT	Walls
1	1	1	1	1

(\*) The largest point section in all the energy category.



# Materials.

The materials category endorses practices that ensure **responsibly sourced materials**. It encourages steps taken to reduce the environmental impact over the life of the material including extraction, processing, manufacturing, and recycling. The Materials category accounts for 15% of the total BREEAM evaluation in the UK.



max.  
credits

7

## MAT 01

### Building Life Cycle Impacts

**Aim**  
To reduce the burden on the environment by recognising and encouraging measures to optimise construction product consumption efficiency and the selection of products with a low environmental impact over the life cycle of the building.

- Assessment criteria**  
Measuring the life cycle environmental impact of building elements (7 credits)
- Substructure & upper floors

The BerryAlloc way				
- All our products influence key building elements (internal floor finishes, upper floors, ground floor and internal walls).				
DPL	HPF	PQT	LVT	Walls
1	1	1	1	1

max.  
credits

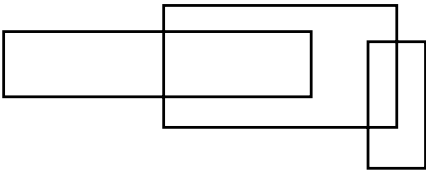
1

## MAT 02

### Environmental Product Declarations

**Aim**  
To encourage availability of robust and comparable data on the impacts of construction products through the provision of EPD.

- Assessment criteria**
- Specify construction products with EPD that achieve a total EPD points score of at least 20.



The BerryAlloc way				
- Our HPF, DPL, LVT products contain EPDs.				
DPL	HPF	PQT	LVT	Walls
1	1	1	1	1

max.  
credits

4

MAT 03

Responsible Sourc-  
ing of construction  
products\*

Aim

To facilitate the selection of products that involve lower levels of negative environmental, economic, and social impact across their supply chain including extraction, processing, and manufacture.

Assessment criteria

100% of timber and timber-based products used on the project are 'Legal' and 'Sustainable' as per the UK Government's Timber Procurement Policy (TPP)

- Using materials with responsible origin (3 credits)

The BerryAlloc way

- We have ISO 9001 and ISO 14001 certified companies.
- PEFC™ and FSC certifications prove that all wood is sourced from sustainably managed forests.
- 70% of the required wood for the production of our parquet is extracted from local, sustainably managed French forests.
- We limit our supply chain as short as possible to minimize CO<sub>2</sub> emissions.

DPL

HPF

PQT

LVT

Walls

1

1

1

1

1

(\*) Most difficult BREEAM issue to achieve.

max.  
credits

1

MAT 05

Designing  
for durability  
& resilience

Aim

To reduce the need to repair and replace materials resulting from damage to exposed elements of the building and landscape.

Assessment criteria

Protecting vulnerable parts of the building from damage (1 credit)

- Protecting exposed parts of the building from material degradation

The BerryAlloc way

- The robustness of all our products is tested rigorously.
- Our locking systems are extremely strong. AluLoc has a tensile strength of 1,200 kg per linear metre.
- We offer a big range of products that are extremely resistant to scratches and stains.
- Unequalled in their solid strength (class 34/AC6), our High Pressure Floors can tolerate high traffic, impact of various kinds and heavy loads.

DPL

HPF

PQT

LVT

Walls

1

1

1

1

1

max.  
credits

1

MAT 06

Material  
efficiency

Aim

To avoid unnecessary materials use arising from over specification without compromising structural stability, durability, or the service life of the building.

Assessment criteria

Efficient use of materials (1 credit)

- Report on achieved targets and the actual material efficiency.

The BerryAlloc way

- We continuously identify opportunities to optimise materials.
- Our Luxury Vinyl Planks & Tiles use 30% less material than most competitors.
- All Luxury Vinyl Planks & Tiles products contain up to 50% recycled content and are 100% recyclable.
- The laminate top layer of our HPF range consists of 30% recycled paper.

DPL

HPF

PQT

LVT

Walls

1

1

1

1

1





# Waste management.

The Waste category aims to **reduce waste arising** in the **construction and operation phases** of the project. It encourages good design and construction practices and recognises measures in place to reduce future waste. The Waste category accounts for 6% of the total BREEAM evaluation in the UK.



## WST 01 Construction Waste Management

**Aim**  
To reduce construction waste by encouraging reuse, recovery, and best practice waste management practices to minimise waste going to landfill.

- Assessment criteria**
- Diversion of resources from landfill (1 credit)

**The BerryAlloc way**

- All our Luxury Vinyl Planks & Tiles products are 100% recyclable.
- Our packaging is also recyclable.

DPL	HPF	PQT	LVT	Walls
1	1	1	1	1



## WST 04 Speculative finishes

**Aim**  
To encourage the specification and fitting of finishes selected by the building occupant and therefore avoid unnecessary waste of materials.

- Assessment criteria**
- Office buildings developed for unknown and known occupants (1 credit)

**The BerryAlloc way**

- Many of our products vary in material, size and color.
- We provide a variety of floor and wall finishes for known and unknown occupants.
- We provide easy installation methods for show areas.

DPL	HPF	PQT	LVT	Walls
1	1	1	1	1



## WST 06 Design for Disassembly & Adaptability

**Aim**  
To avoid unnecessary material use, cost and disruption arising from the need for future adaptation works due to changing functional demands AND to maximise the ability to reclaim and reuse materials at final demolition in line with the principles of a circular economy.

- Assessment criteria**
- Design for disassembly and functional adaptability (1 credit)**
- Conduct a building-specific functional adaptation strategy study and develop recommendations.
- Implement disassembly and functional adaptability (1 credit)**
- Produce a building adaptability and disassembly guide for prospective tenants.

**The BerryAlloc way**

- Many of our products vary in material, size and color.
- All our products can be easily installed thanks to our patented locking systems and clear installation instructions.
- Our floors offer the possibility to change/replace flooring depending on the changing lay-out and function of the building.

DPL	HPF	PQT	LVT	Walls
2	2	2	2	2

# Services & resources.

By using our products, **19 BREEAM credits** can be achieved for your projects across the categories of Management, Health & Wellbeing, Energy, Materials & Waste. The feasibility of achieving these credits was analysed and confirmed by ENCON an independent expert engineering firm specialised in energy consumption optimization.

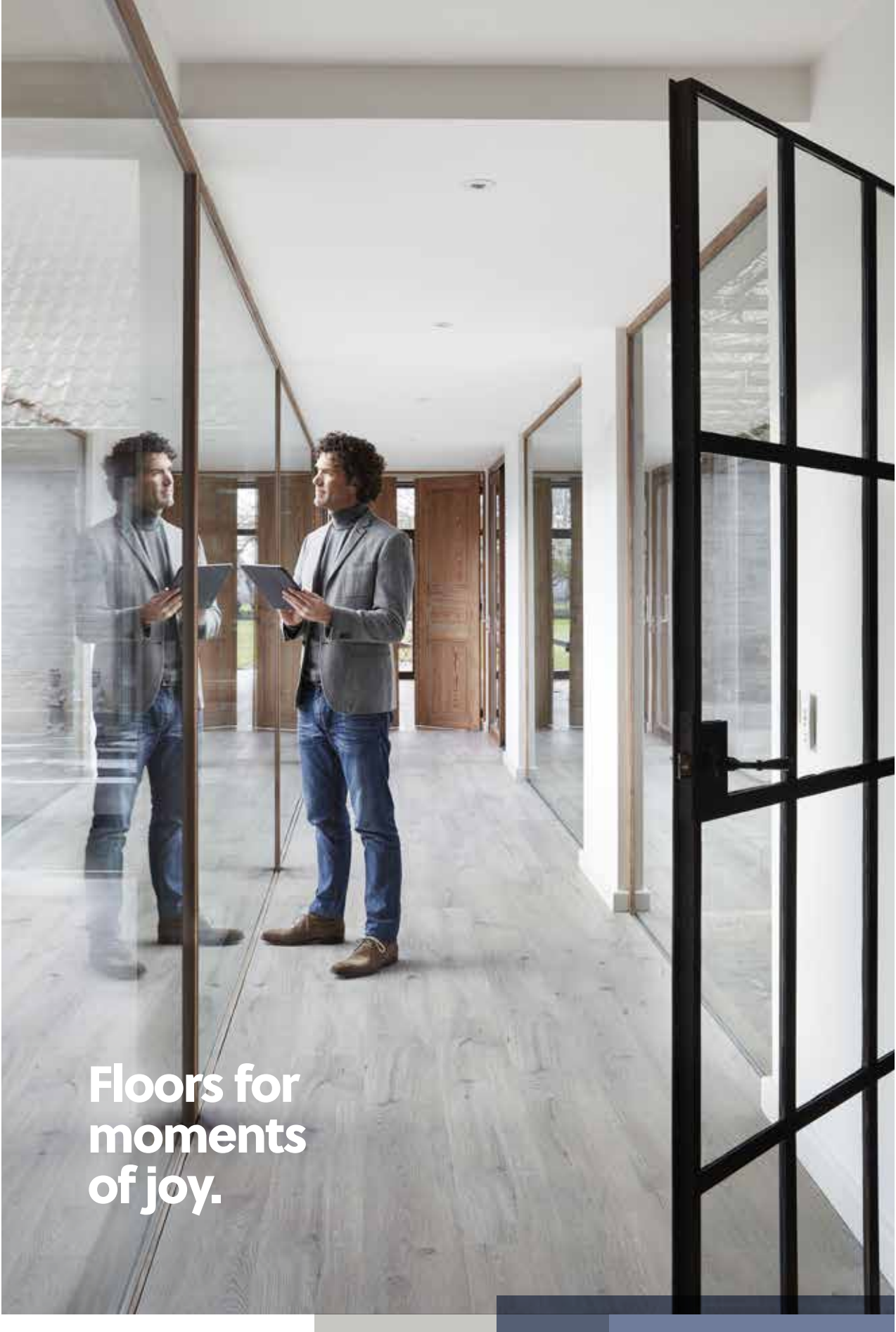



## Specialised experts

Need help? Our experts are here to help clarify your BREEAM questions. The team consists of trained BREEAM professionals that can guide you through the best product selections for your projects.

## Guides & Resources

We provide all our clients with all the necessary documentation needed for your BREEAM assessment. The documentation includes certificates and product specifications to increase BREEAM ratings.





# Our Sustainability certifications

Our products meet the highest standards, so you can enjoy them longer in your home.  
Over the years, we’ve accrued many labels and certifications.

Organisation	What does this mean to you?	Which BerryAlloc™ products?
Indoor Air Quality A+	The A+ label demonstrates that the amount of VOCs (volatile organic compounds) produced by our products is among the lowest and that all indoor air quality standards are met in full.	All products, except for our Chateau Laminate Floors
FloorScore	The FloorScore Indoor Air Quality Certification means that our products are independently certified to comply with the strict VOC emissions criteria of California, USA.	Laminate: Trendline US, Hydrana, Laguna LVT: Pure, Style and Live
M1	This Finnish classification presents emission requirements for building materials, fixtures, and furniture used in office and residential buildings concerning good indoor air quality. M1 is the highest score possible.	All our High-Pressure Floors and Luxury Vinyl Planks & Tiles
PEFC™	All the wood we use is sourced from sustainably managed forests (PEFC™ Certified) that meet the strictest environmental, social, and economic requirements. PEFC™ certification ensures that the timber used for the production of our products: <ul style="list-style-type: none"><li>- doesn’t come from protected forests</li><li>- doesn’t endanger protected species</li><li>- doesn’t contribute to deforestation</li><li>- doesn’t impact local communities negatively</li></ul>	All our Parquet, High Pressure Floors and Laminate Floors
EPD (Environmental Product Declarations)	Environmental Product Declarations (EPD) present transparent, verified, and comparable information about the life cycle environmental impact of products.	All our High Pressure Floors, Luxury Vinyl Planks & Tiles and Laminate Floors

Organisation	What does this mean to you?	Which BerryAlloc™ products?
Phthalate-free	None of our products contain phthalates which can be harmful to your health.	All our products are phthalate-free
REACH	REACH is a European Union regulation and stands for Registration, Evaluation, Authorisation, and Restriction of Chemicals. REACH aims to protect human health and the environment from the use of chemicals.	All our products are 100% REACH compliant
Eurofins Indoor Air Comfort (gold)	Eurofins Indoor Air Comfort Gold certification is your best assurance that our products fulfill low emissions requirements.	All our Luxury Vinyl Planks & Tiles
ISO 9001	The ISO 9001 standard demonstrates our ability to consistently provide products and services that meet customer and regulatory requirements.	All our Laminate Floors, Luxury Vinyl Planks & Tiles and High Pressure Floors
ISO 14001	ISO 14001 is the international standard that specifies requirements for an effective environmental management system (EMS).	All our High Pressure Floors
CE	This label means that our products have been assessed to meet high safety, health, and environmental protection requirements.	All our products

Let our expert team guide you through our product choices that fit your BREEAM goals.

Contact our service team:  
T +32 (0)056 67 67 62  
contact@berryalloc.com

# Notes

[illegible]





**BerryAlloc**  
Industrielaan 100  
8930 Menen, Belgium  
T +32 56 67 66 11  
[info@berryalloc.com](mailto:info@berryalloc.com)

**[berryalloc.com](http://berryalloc.com)**